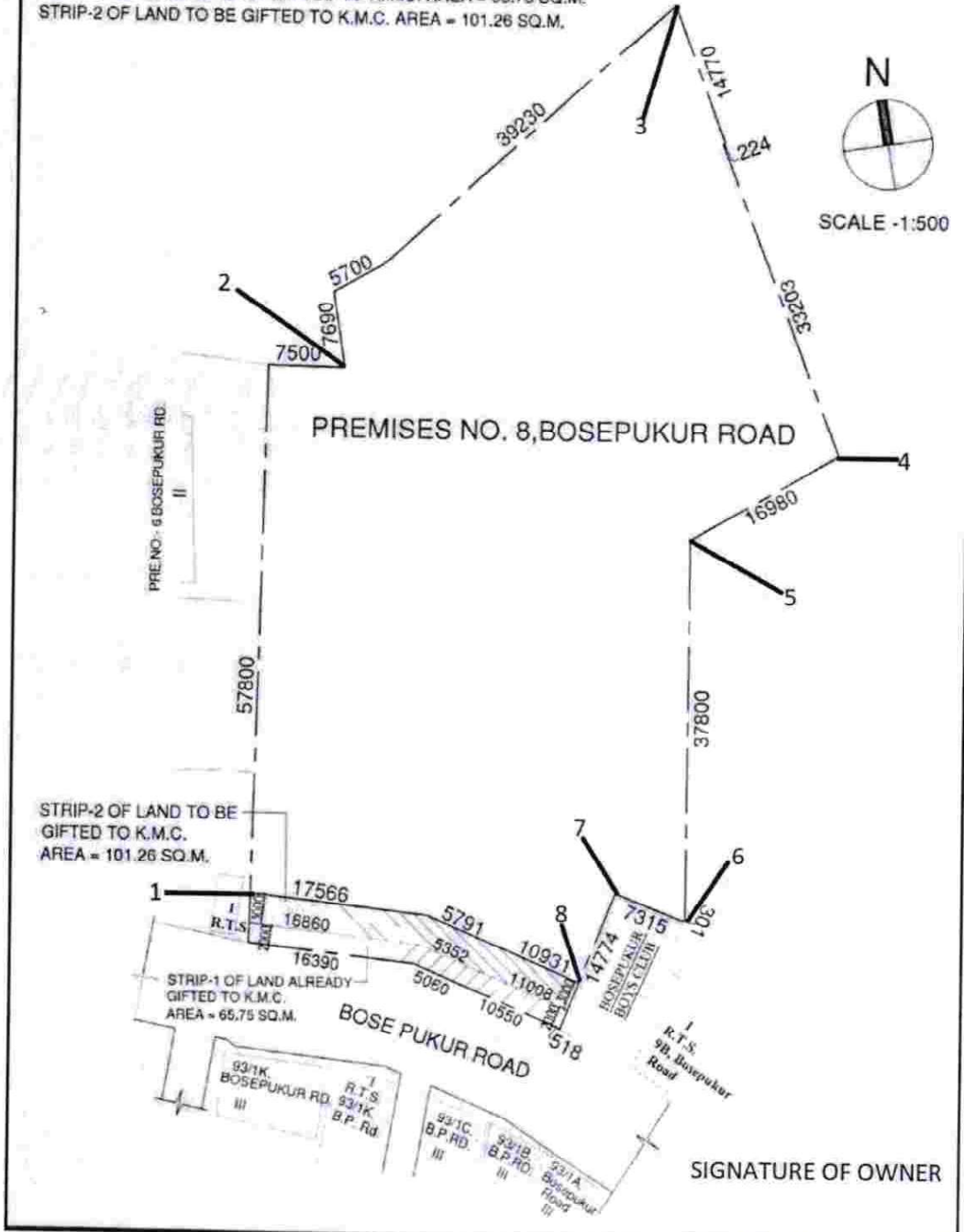


**SITE PLAN OF PREMISES NO. 8, BOSEPUKUR ROAD, KOLKATA-700042,  
WARD NO.- 67, BOROUGH -VII,  
LAND AREA - 3683.00 SQ.M.**

STRIP-1 OF LAND ALREADY GIFTED TO K.M.C. AREA = 65.75 SQ.M.  
STRIP-2 OF LAND TO BE GIFTED TO K.M.C. AREA = 101.26 SQ.M.



**SITE CO-ORDINATES**

- |                                |                                |
|--------------------------------|--------------------------------|
| 1. 22 31 4.84 N, 88 22 56.47 E | 5. 22 31 6.00 N, 88 22 58.15 E |
| 2. 22 31 6.68 N, 88 22 56.81 E | 6. 22 31 4.67 N, 88 22 57.98 E |
| 3. 22 31 7.58 N, 88 22 58.29 E | 7. 22 31 4.78 N, 88 22 57.72 E |
| 4. 22 31 6.07 N, 88 22 58.65 E | 8. 22 31 4.37 N, 88 22 57.46 E |

**SKDJ KASTURI**

Partner